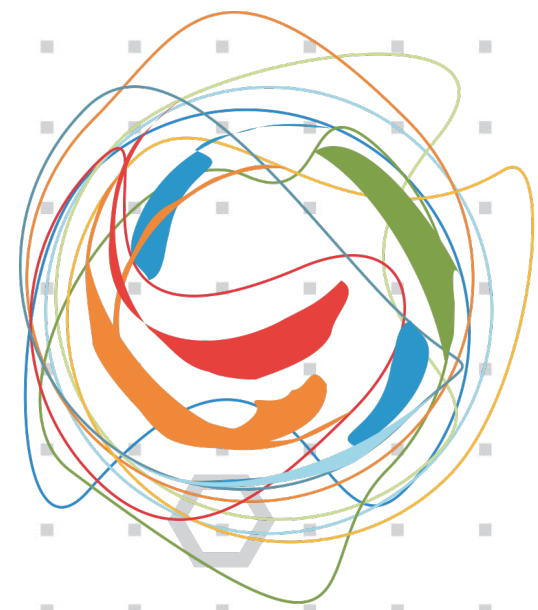


POWERED BY



Ciências
ULisboa



tec labs
CENTRO DE INOVAÇÃO

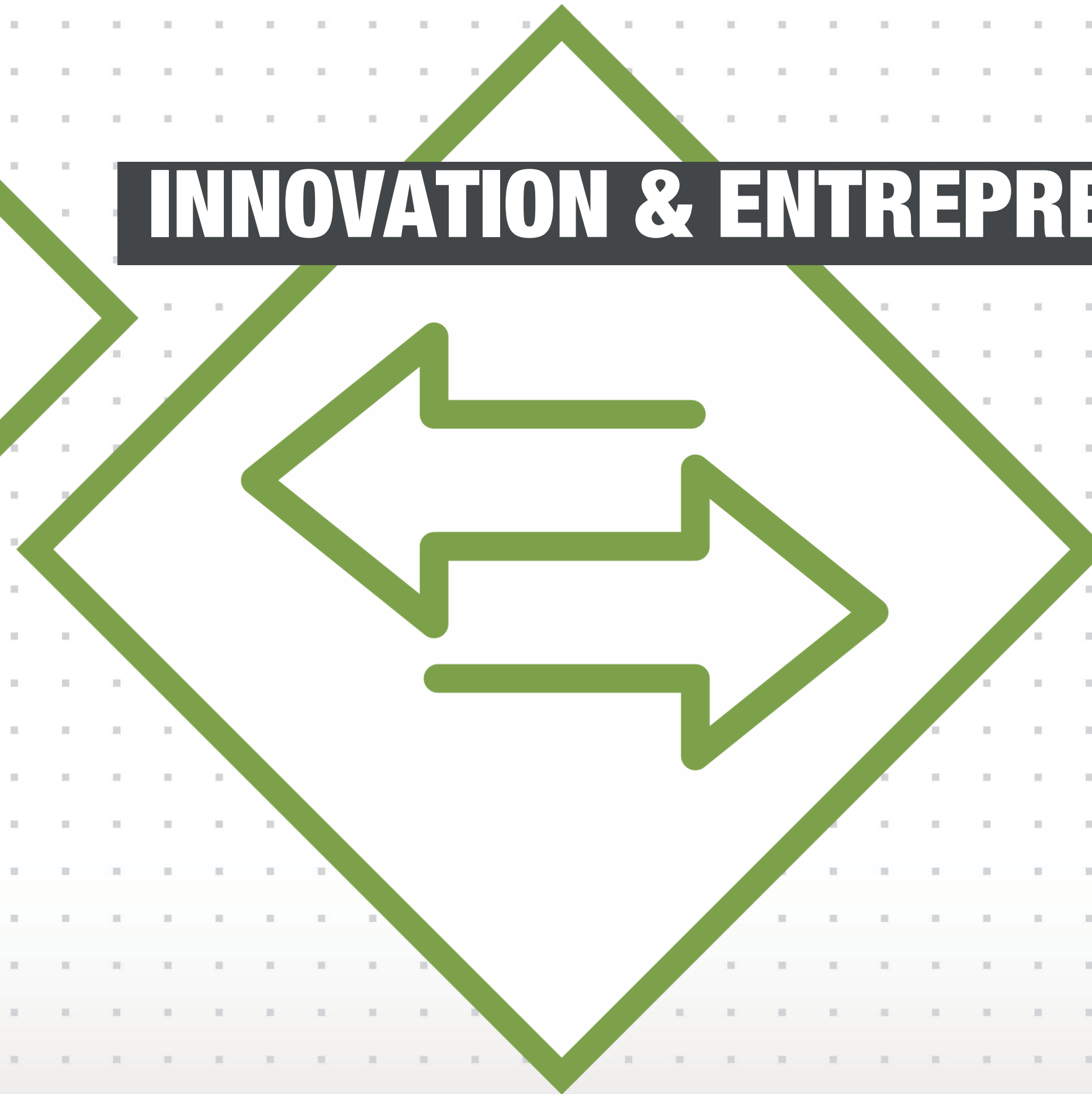
**THE PLACE
TO DRIVE YOUR
AMAZING SCIENCE
INTO A SUCCESSFUL
BUSINESS.**

OUR MISSIONS



INCUBATION

INNOVATION & ENTREPRENEURSHIP



POWERED BY



Ciências
ULisboa



INCUBATION

OUR FOCUS

FOOD, FARM, FOREST & SEA



URBAN MOBILITY & SUSTAINABILITY



EMERGING TECH



HEALTH & WELLNESS



OUR SERVICES



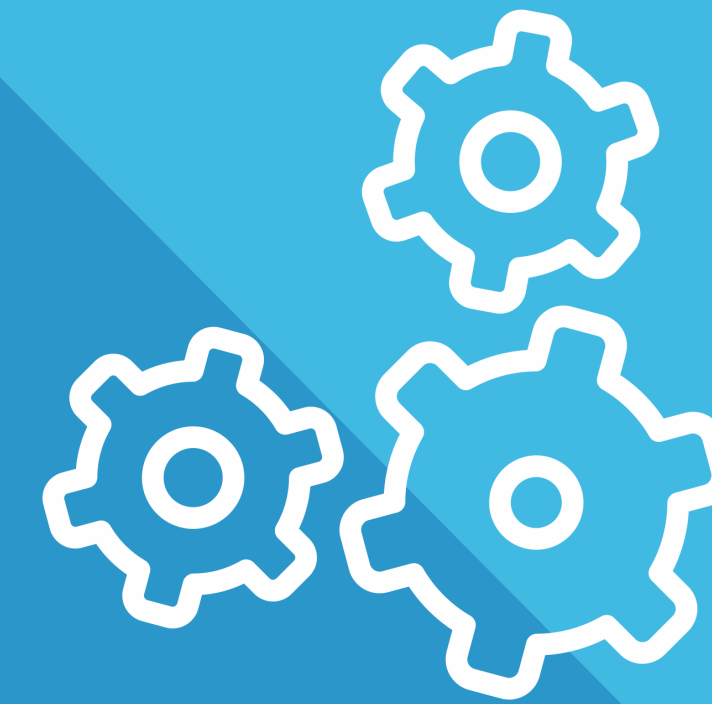
CHECK-IN

**VIRTUAL/OFFICE/LAB/COLAB
SHARED SERVICES
FOOD HALL
PARKING**



BOOST

**INCUBATION PROGRAM
TROUGH WHICH WE MEET
AND SUPORT OUR STARTUPS
ON A REGULAR BASIS**



CONNECT

**WE CONNECT THEM WITH
OUR MENTORS, INDUSTRY
AND INVESTOR'S NETWORK**

COMPETITIVE ADVANTAGES

We have support labs on the incubator run by a group of applied researchers with +20 years of experience in the fields of microbiology and molecular biology and industry collaboration

Inside these labs there are +3Million in equipment and a lot of know-how that is available to our startups



. We are a university-based incubator, so we also deliver value to our entrepreneurs and innovators through the close connections we have to our teaching departments and R&D units, as well as with the Rectory of the University and other Schools of ULisboa

DATA

POWERED BY



32120

INCUBEES COMPANIES

**30 YEARS OF
ACTIVITY**

100

ANNUAL

JOB

€40M

REVENUE

**2 EUROPEAN STARTUP FROM
BRIDGEHEAD (EIT HEALTH)**

24

APPLICATIONS
STARTUP VISA

**4 INTERNATIONAL
STARTUPS ACCEPTED**

GROWING GLOBAL

INTERNATIONAL
STARTUPS
INCUBATED **6**



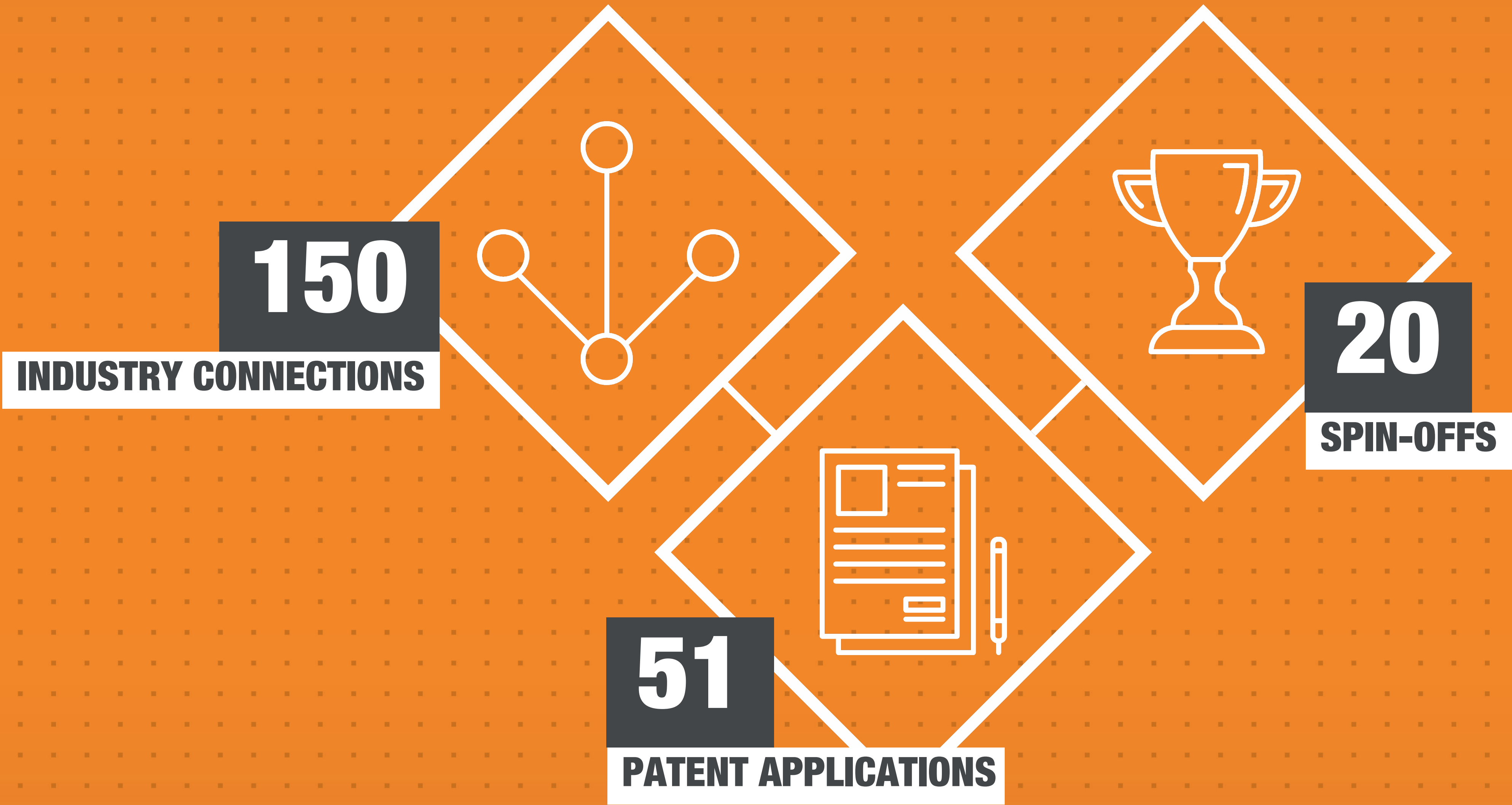
INTERNATIONALIZATION SUPPORT TO

**4 EUROPEAN
STARTUPS**





INNOVATION & ENTREPRENEURSHIP



SCIENCE²BUSINESS

ECONOMIC VALORISATION OF SCIENTIFIC AND TECHNOLOGICAL KNOWLEDGE

**AN INNOVATIVE METHODOLOGY THAT ENCOURAGES AND SUPPORTS THE
ECONOMIC VALORIZATION OF SCIENTIFIC AND TECHNOLOGICAL KNOWLEDGE
IN HIGHER EDUCATION AND RESEARCH CENTRES WITHIN ULISBOA**

SCIENCE²BUSINESS

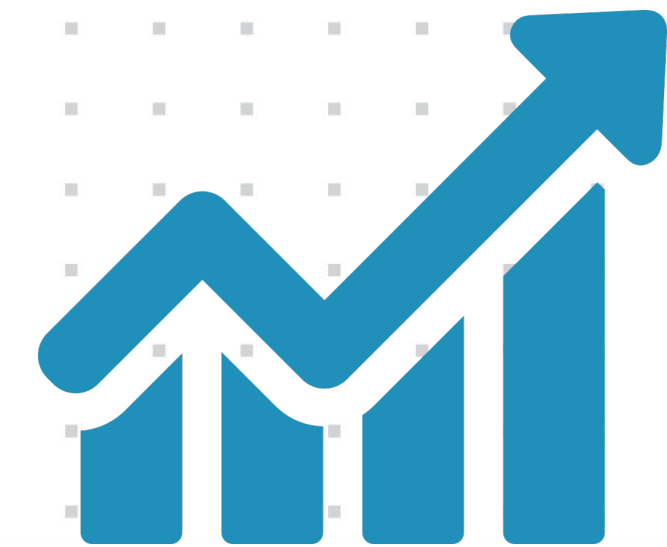
ECONOMIC VALORISATION OF SCIENTIFIC AND TECHNOLOGICAL KNOWLEDGE



LEARNING
SCIENCE²BUSINESS



SELECTION
SCIENCE²BUSINESS



EVOLUTION
SCIENCE²BUSINESS

The LEARNING stage is divided in formal and non-formal education: the first includes optional courses on entrepreneurship and innovation destined to undergraduate and graduate students; non-formal education consists of workshops on various topics of business, design and innovation that are open to students and the general public.



LEARNING

SCIENCE²BUSINESS

DATA

350 PROJECTS **1500 STUDENTS ENROLLED**
Non-formal education workshops

7 OPTIONAL COURSES WITH OVER 3000 STUDENTS **50 ORGANIZATIONS INVOLVED IN THE STUDENTS PROJECTS**

SCIENCE¹BUSINESS²
LEARNING

SELECTION is a phase of the methodology where we offer two different programs to work with our main audiences: researchers and students.



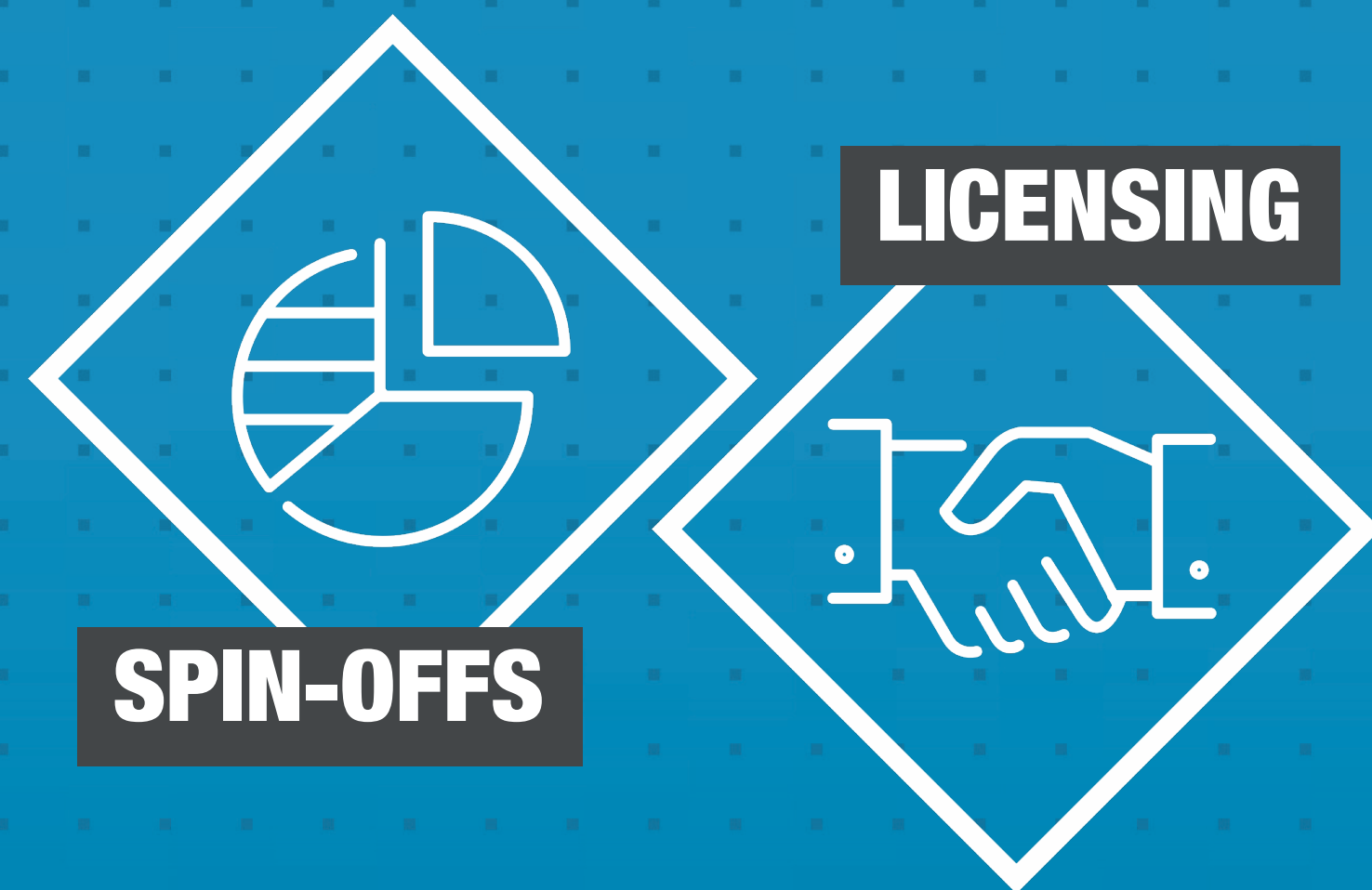
RESEARCHERS AND STUDENTS
IMPACT PROGRAM/CALL FOR PROJECTS



SELECTION

SCIENCE²IN BUSINESS

After the Call for Projects and Summer School, the finalist from both programs enter the **EVOLUTION** where they have access to Tec Labs ecosystem and support in order to grow their project to the next level.

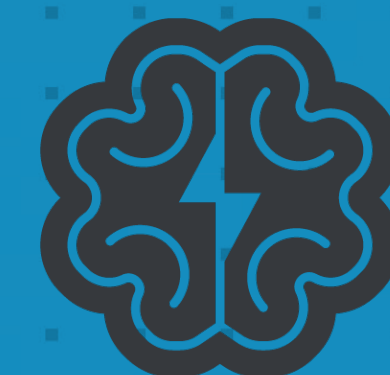


EVOLUTION

SCIENCE²BUSINESS

DATA

36 4 EDITIONS
5 SPIN
OFFS
TEAM
APPLICATIONS



EMOTAI



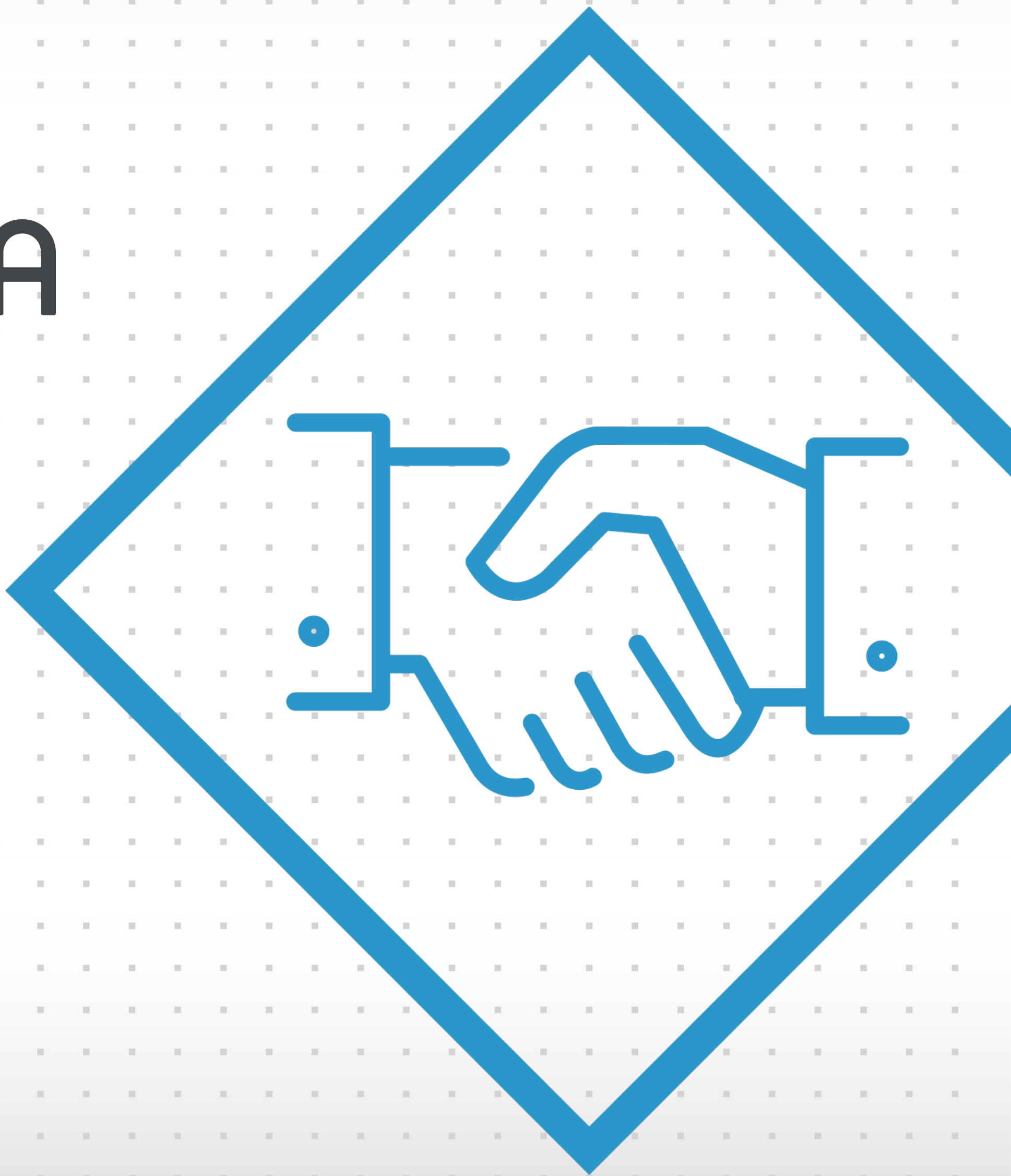
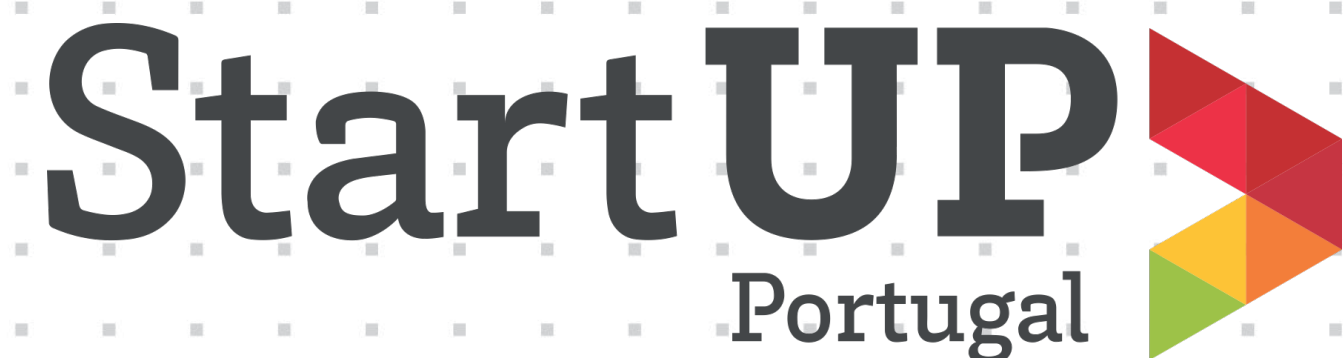
UAWLT

nevarø

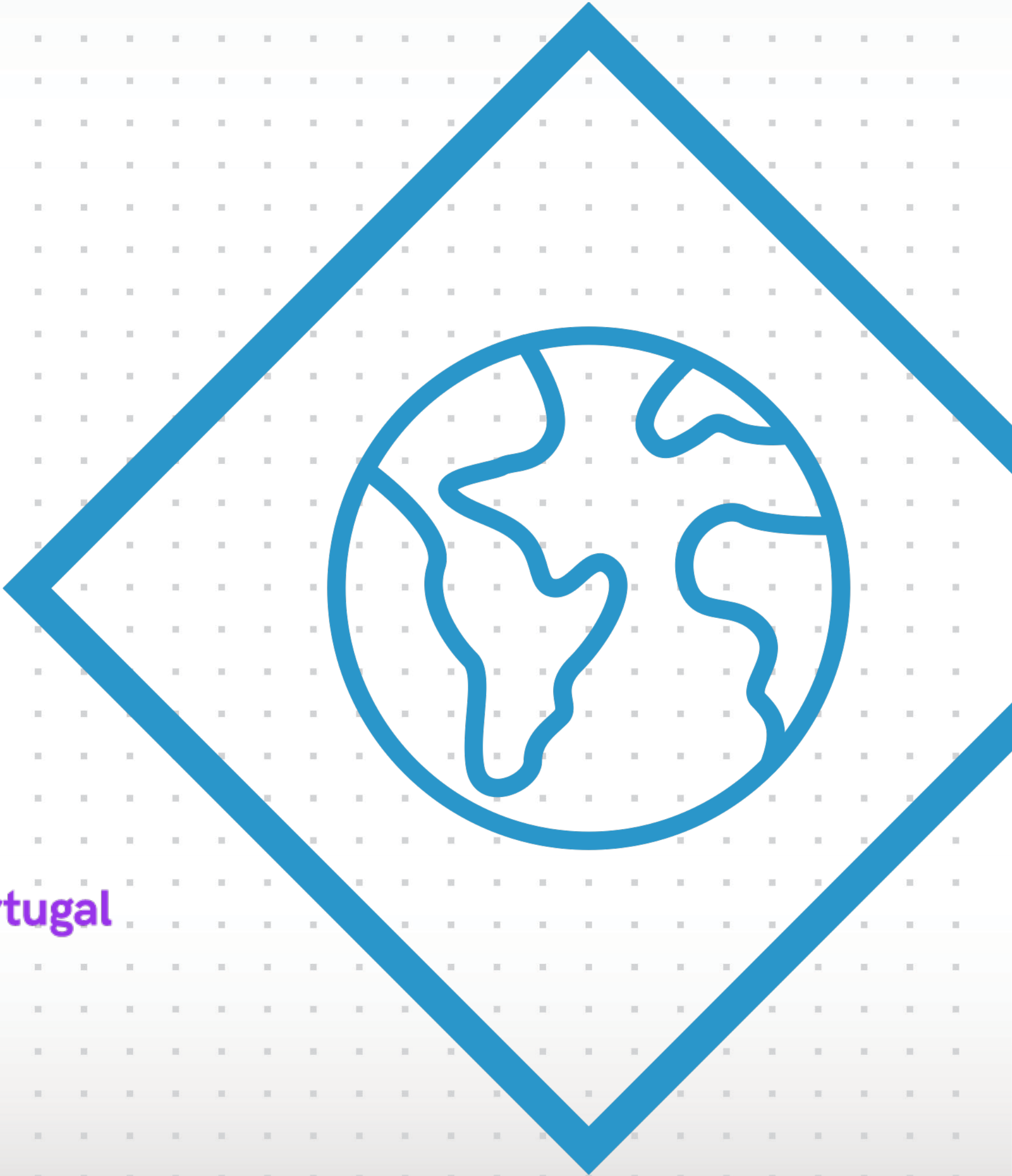
R-nuucell

SCIENCE²BUSINESS
EVOLUTION

PARTNERSHIPS



NETWORKS



WHO WE ARE



GET IN TOUCH

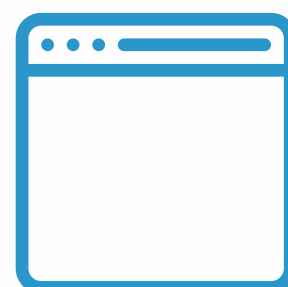
FCUL CAMPUS, LISBON



+351 217 500 006



www.teclabs.pt



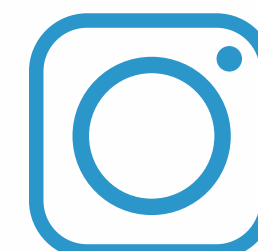
mail@teclabs.pt



/teclabs



@tec.labs



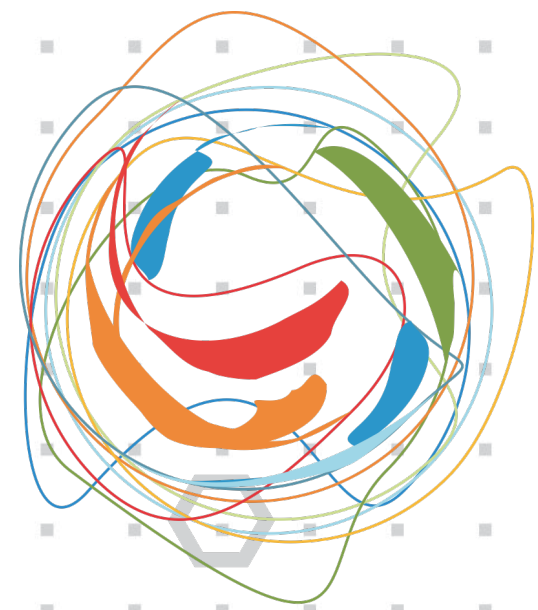
/company/teclabs



POWERED BY



Ciências
ULisboa



tec labs
CENTRO DE INOVAÇÃO

**THANK
YOU**